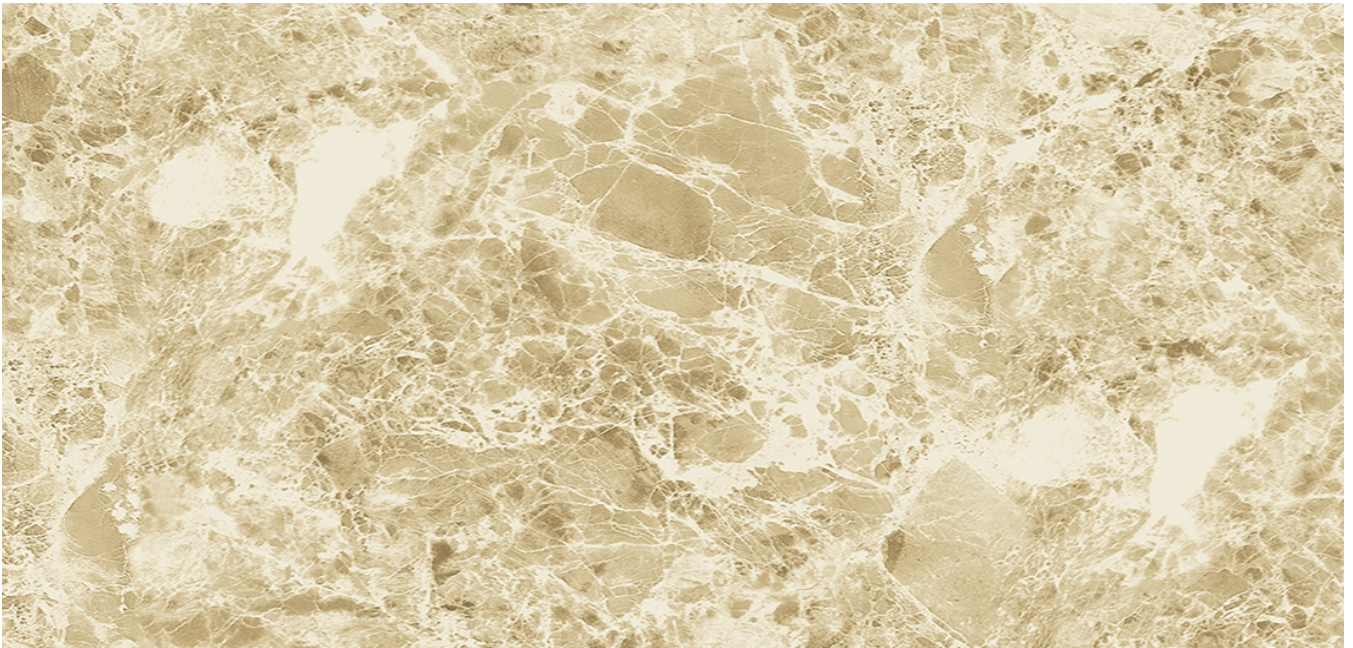


INTERIOR FILMS
2025 Vol.1

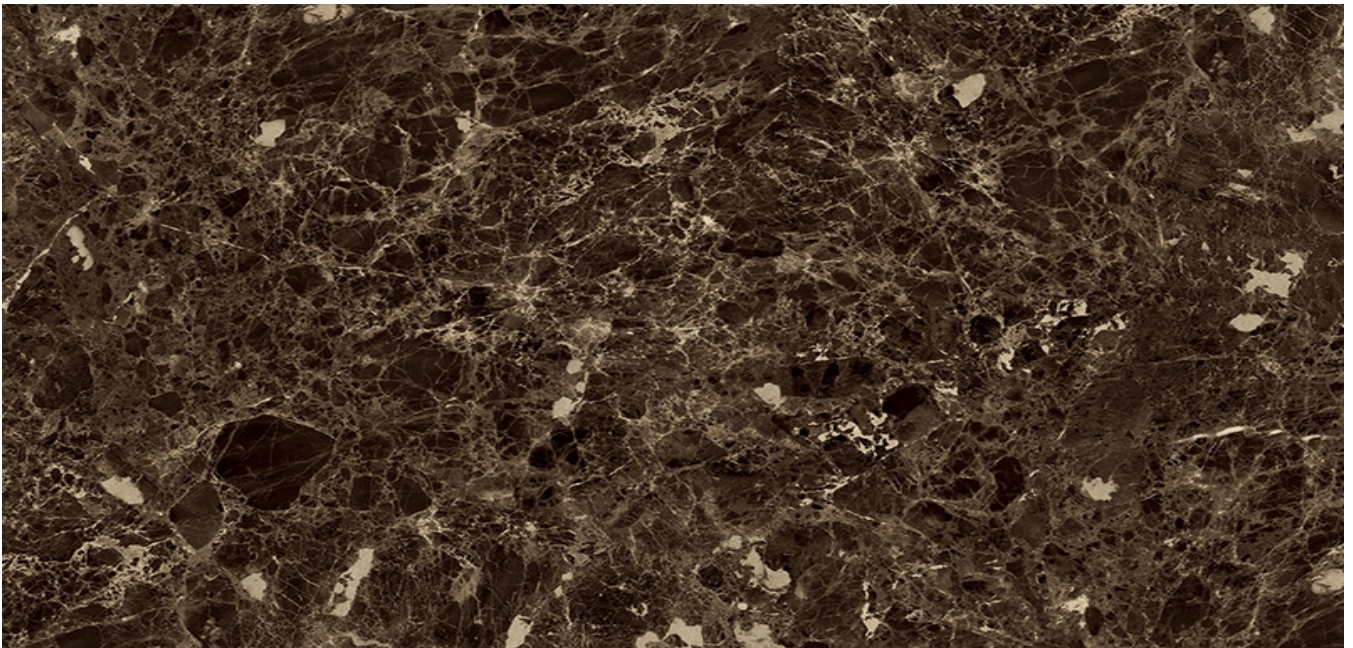
현대인테리어필름 **인필**
MADE IN KOREA

infeel



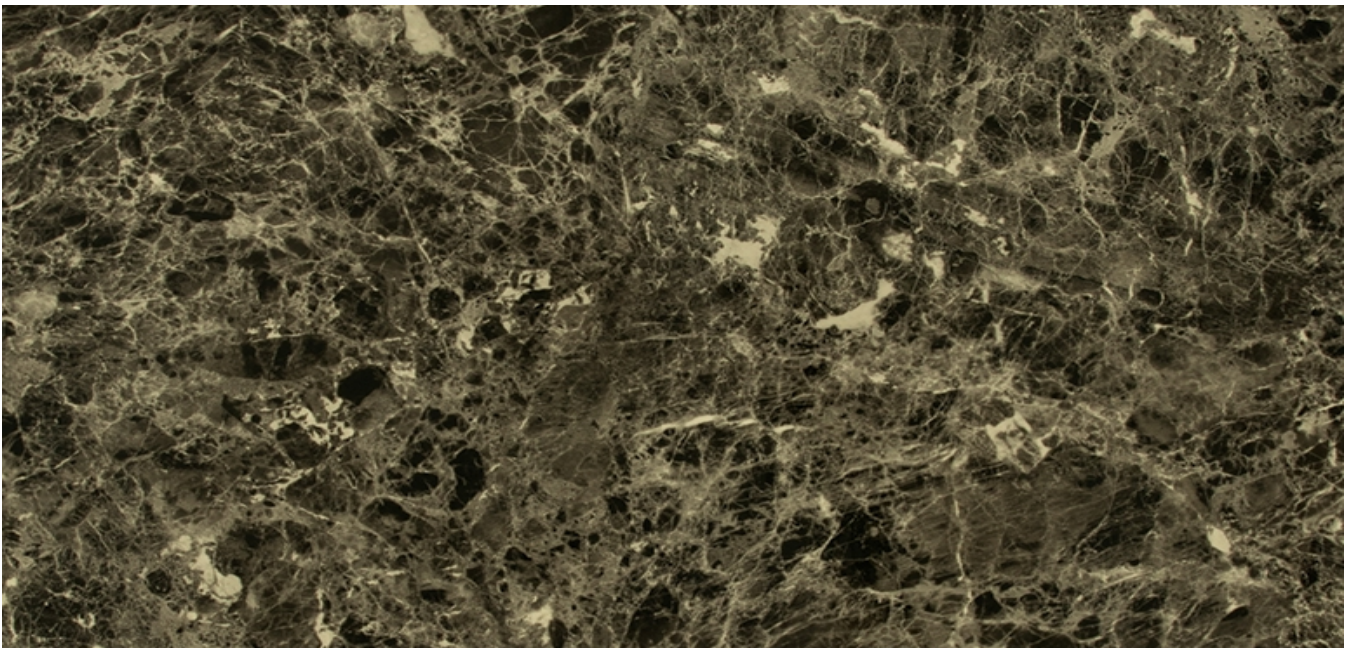
Maron Emperador

GNI 945



Maron Emperador

GNI 948



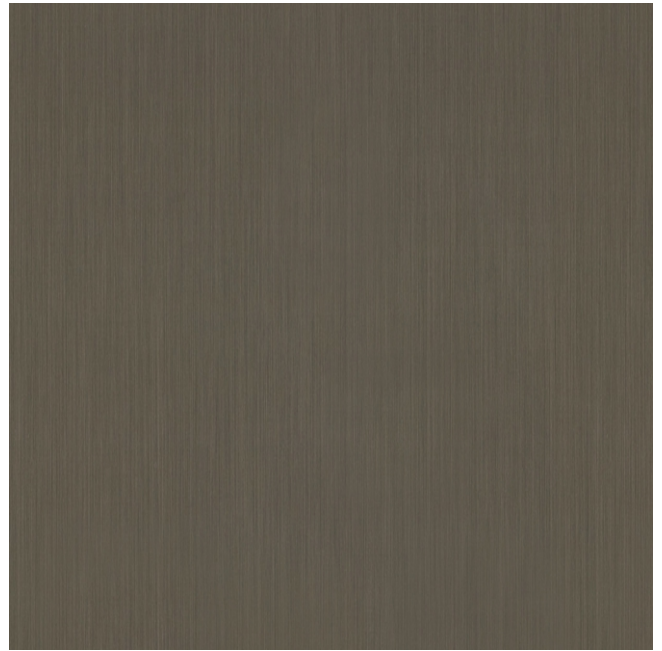
Maron Emperador

GNI 949



Metal

GMT 726



Metal

GMT 762



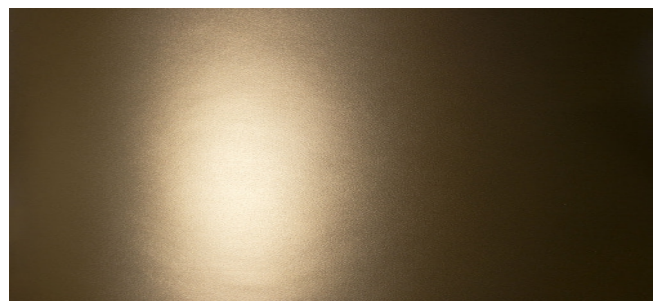
Metal Shiny

GMS 712



Metal Shiny

GMS 717



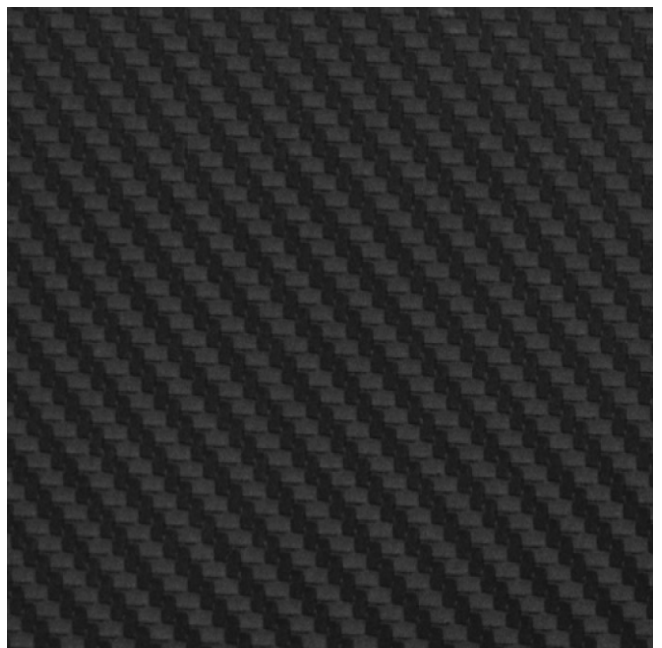
Metal

GMT 232



Red Gold

GNI 910



Metal

GMT 747



Stone

GST 110



Stone

GST 111



Atelier Middle White

GLW 773



Concrete

GLW 776



Fabric

GFB 899



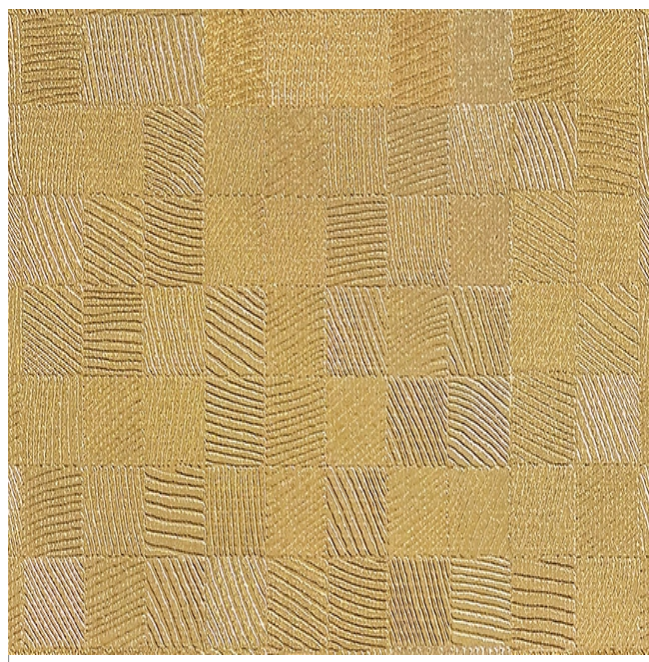
Fabric

GFB 851



Stone

GAB 010



Leather

1230MM x 30M

GLT 708



Lime Gold

GNI 941



Lime Silver

GNI 940



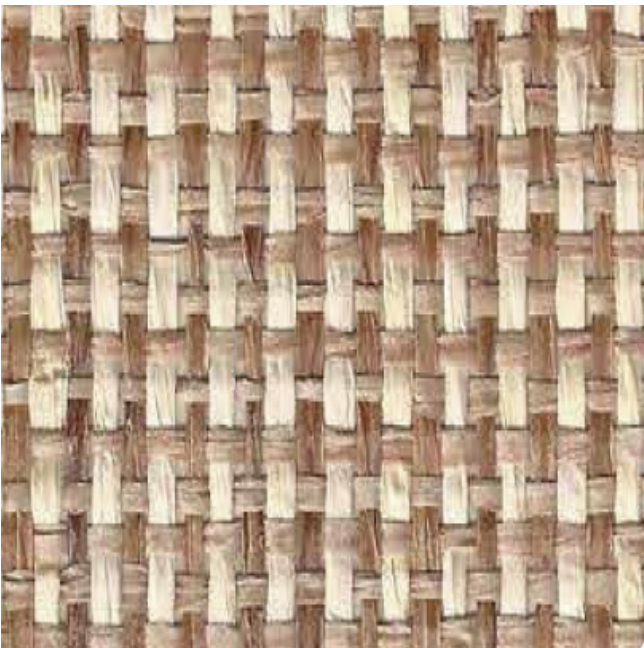
Linearity Gold

GNI 997



Linearity Light Gold

GNI 996



Paper Weave

1060MM x 25M

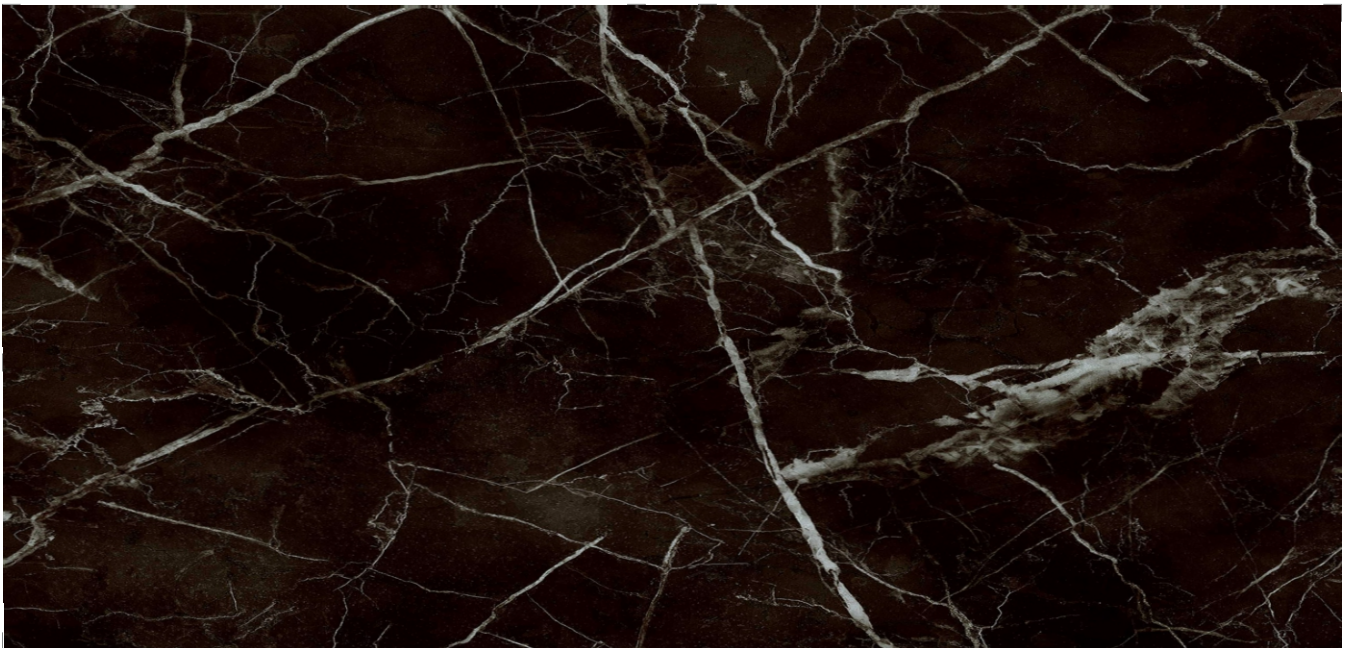
GPW 426



Paper Weave

1060MM x 25M

GPW 436



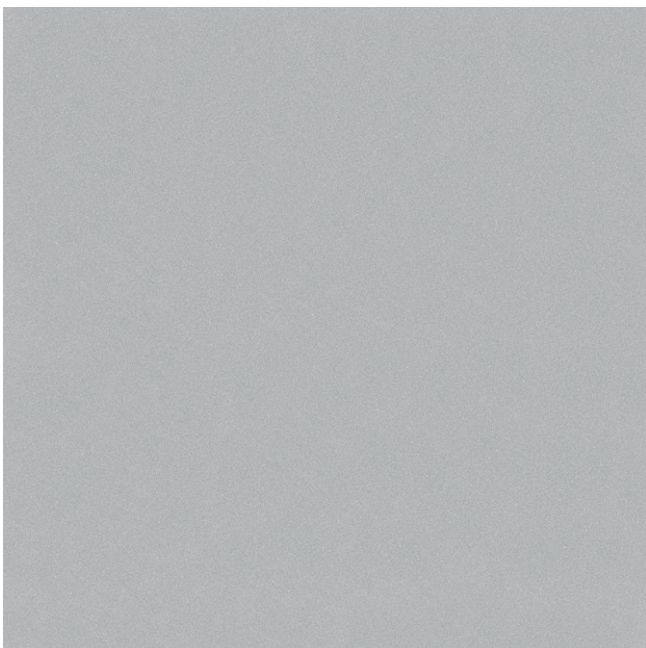
Nero Marquina

GNI 953



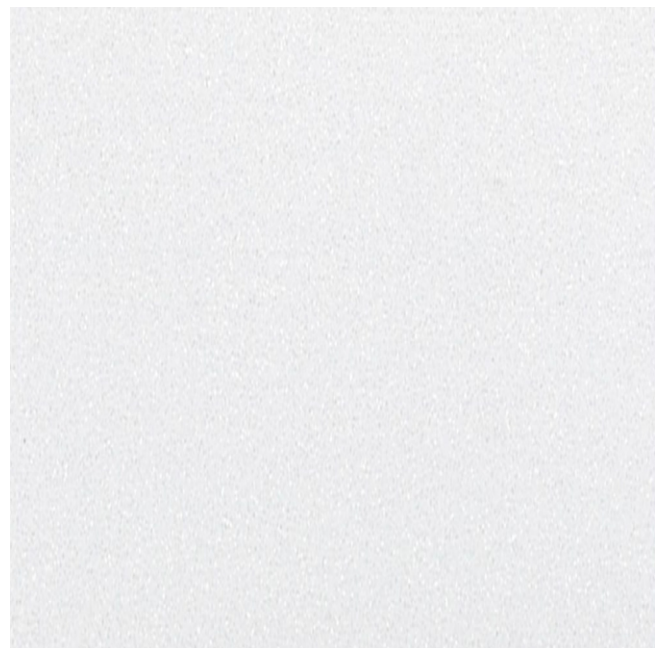
Marble

GNI 987



High-gloss

GHG 978



High-gloss

GHG 980

01

Excellent Workability



Compared to existing surface finishes, construction is easier and the work efficiency is high, which can shorten the work schedule. It is economical in all aspects because it is easy to change and maintain as well as stick to the curved surface.

02

High Durability



Excellent durability keeps it the same as it first felt. Excellent numerical stability minimizes deformation due to thermal temperature and humidity. It has excellent pollution resistance, making cleaning easy.

03

Various Uses



From multi-use facilities such as restaurants, hotels, hospitals, and department stores to any indoor space, such as apartments, office hotels, indoor buildings, pillars, ceilings, doors, art walls, molding and partitions.

Application conditions and product handling

To ensure the best quality finish, please be sure to follow the recommended settings.

▪ Temperature and Dampness

- INFEEL adhesive films should be applied when air and surface temperature are between 68°F(20°C) and 77°F(25°C).
- The minimum recommended temperature is 53°F(11°C). If the temperature is below 53°F : use a heater, such as a portable gas – fired infrared radiant heater to raise the temperature.

▪ High Temperature / Low Temperature Dampness

- Do not apply to damp surfaces. The surface should be completely dry prior to beginning the installation.
- Utilize a heat gun for adhesion strengthening.

▪ Work Environment

- **Proper Lighting.**
The working area should be well lit in order to prevent air pockets or wrinkles on the film.
- **Dust free.**
Working in a dust free area reduces the potential of particles sticking into the film.

▪ Product Handling

- The film must be kept in a cool and dry place. The product should be installed within one year of purchase.
Note : If handling film in the winter, cold weather conditions can lead to cracks on the product.
Tip : Roll up the remaining film and store it inside a paper tube. This will prevent the film from getting damaged.

▪ Surface Preparation

The condition of the surface is critical for a quality installation and finish. As a rule, INFEEL adhesive film can be applied onto any clean, dry, smooth or even slightly porous surfaces. These surfaces must be free of dust, grease and wax : this includes for example, veneer board, aluminum, stainless steel, glass and most painted surfaces. Fresh primer must be completely dry before application because the vapors from the solvents can result in blistering and excessive shrinkage.

Matt Wood / Matt Design / Solid Matt

When constructing bending area, press the product with appropriate force and pressure it completely at surface because the product can be difficult to construct overlapping due to special surface coating treatment.

Wood / Veneer / Hardboard

1. Smooth and polish the surface, using #180 sandpaper.
2. If there are rough, rugged or joint areas then treat the areas with putty (a filling or tamping) and follow step 1.
3. Coat the surface evenly with the exclusive primer for INFEEL adhesive films.

Steel / Aluminum / Stainless

1. Smooth and polish the surface, using #180 sandpaper. Scrape the rust off the surface and remove the filth with paint(lacquer) thinner.
2. If there are rough, rugged or joint areas then treat the areas with poly – putty and follow step 1.
3. Coat the surface evenly with the exclusive primer for INFEEL adhesive films. Try not to leave primer residue to the surface border.

